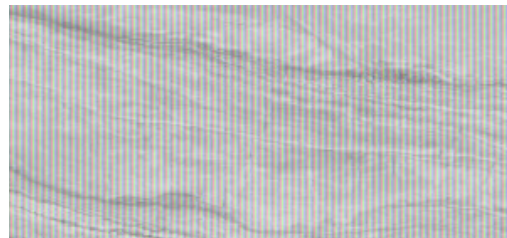


MUSEUM

NOVA GREY/75,5X151/EP

Model: **NOVA GREY/75,5X151/EP**
Reference: **37728** **GREY**
Size: **75,5X151** cm
Thickness: **10,00** mm
Finish: **Pulido**
Body Type: **PORCELAIN - GROUP BIa**
GL - GLAZED Ceramic Tile



Water absorption

EN ISO-10545-3	Water absorption	< 0,5 %
----------------	------------------	---------

Dimensional characteristics

EN ISO-10545-2	Surface quality	> 95%
EN ISO-10545-2	Curvature flatness	± 0,5 % / ± 2,0 mm
EN ISO-10545-2	Thickness	± 5% / ± 0,5 mm
EN ISO-10545-2	Length and Width	± 0,6 % / ± 2,0 mm
EN ISO-10545-2	Rectangularity	± 0,5% / ± 2,0 mm
EN ISO-10545-2	Straightness of sides	± 0,5 % / ± 1,5 mm

Mechanical characteristics

EN ISO 10545-11	Crazing resistance	Pass
EN ISO 10545-12	Frost resistance	Pass
EN ISO 10545-9	Thermal shock resistance	Pass
EN ISO-10545-4	Breaking strength	> 1300 N
EN ISO-10545-4	Modulus of rupture	> 35 N/mm ²

Surface characteristics

EN ISO 10545-7	Visible failure at No of revolutions	-
----------------	--------------------------------------	---

Chemical characteristics

EN ISO-10545-13	High concentrations of acids and alkalis	HB/HB/HB
EN ISO-10545-13	Low concentrations of acids and alkalis	LB/LB/LB
EN ISO-10545-13	Household chemicals and swimming pool salts	A/A
EN ISO-10545-14	Stain resistance	5/-/5/5

MUSEUM

NOVA GREY/75,5X151/EP

Model: **NOVA GREY/75,5X151/EP**
Reference: **37728** **GREY**
Size: **75,5X151** cm
Thickness: **10,00** mm
Finish: **Pulido**
Body Type: **PORCELAIN - GROUP Bla**
GL - GLAZED Ceramic Tile



Non-slip characteristics

ANSI A137	Dynamic coefficient of friction (DCOF)	< 0,42
BS-7976-2	Slip resistance test (PTV) - wet conditions	+16
UNE-41901:2017 EX	Slip resistance (pendulum test)	0

CE MARKING



CE Declaration of Performance: **001CPR2017-08-01**

% RECYLED CONTENT



ISO 14021: Labels and Declarations - Environmental Claims **42,00 %**

Before laying the tiles, check the shade, calibre and quality. No claims will be accepted once the tiles have been laid. Leave a tile joint of at least 0.5 mm in the case of rectified tiles and 1.5 mm for non-rectified ones. The tile colour shown in this data sheet is merely indicative and it might differ from the real tile colour. This document is purely for sales purposes and it cannot be used in any legal or administrative proceedings, in a witness statement, or as documentary proof without the express permission of PERONDA GROUP.